

More Products. More Services. Global Connections.

PRODUCT OVERVIEW



Note from the CEO



Ladies and Gentlemen,

For over 75 years Amphenol has enjoyed success as the interconnection technology provider of choice to industry-leading companies around the world. One of our key strategic areas of focus has been and is the Industrial market. Our organization works with leading manufacturers across a wide range of applications - including Energy Generation & Distribution, Transportation, Heavy Equipment, Factory Automation, Wireless Outdoor, ChipCard Readers - enabling smarter, faster and better technologies to connect products to customer solutions.

The Industrial market footprint of Amphenol covers over facilities in more than 12 different European countries and more than 30 countries worldwide. Our successful expansion into new regions as well as new industrial applications is a direct reflection of our agile, entrepreneurial management team and our unwavering commitment to execute Amphenol's strategies for the benefit of our customers, shareholders and employees.

This product overview highlights our primary Industrial end-markets and our comprehensive portfolio of leading interconnection technologies. It is designed to help you understand the Industrial capabilities of Amphenol to achieve its high-technology aspirations.

Thank you for partnering with Amphenol. Our entire organization is at your service.

A stylized, handwritten signature in black ink, consisting of several loops and a long horizontal stroke at the end.

R. Adam Norwitt
President and CEO, Amphenol Corporation



SECURITY, RELIABILITY AND COMFORTABLE SERVICE FROM ONE SOURCE.

More time for important things: benefit from our service and diversity

Enjoy security, reliability and comfortable service from one source. INDUSTRIAL@AMPHENOL offers one of the most individual and most diversified service programmes in the market – exclusively for industrial customers. Access all possibilities of the Amphenol group through your personal expert adviser.



WIDE PRODUCT RANGE

Take advantage of a choice of Amphenol products. Our broad product portfolio offers individual solutions from more than 85 member companies in the global Amphenol group.



EXCLUSIVENESS AND FLEXIBILITY

One face to the customer: every inquiry is handled on an individual service level by your personal key account service partner. This ensures maximum transparency and best-in-class flexibility in the whole process.



QUALITY

Interconnect systems need reliability, speed and flawless data transmission. We continuously test and guarantee the required standard in our products – and also in our personal services.



INDIVIDUAL SOLUTIONS

Your project requires an individual solution that is not available off-the-shelf? As your think tank and discussion partner we provide engineering support and solution-oriented development for your tailor-made Amphenol product.



SPEED AND AVAILABILITY

Smart and intelligent processes are the secret behind our service programme. Flexible planning and distribution, perfect logistics and highest availability are our key factors for best customer service.



GLOBAL KEY ACCOUNT SERVICE

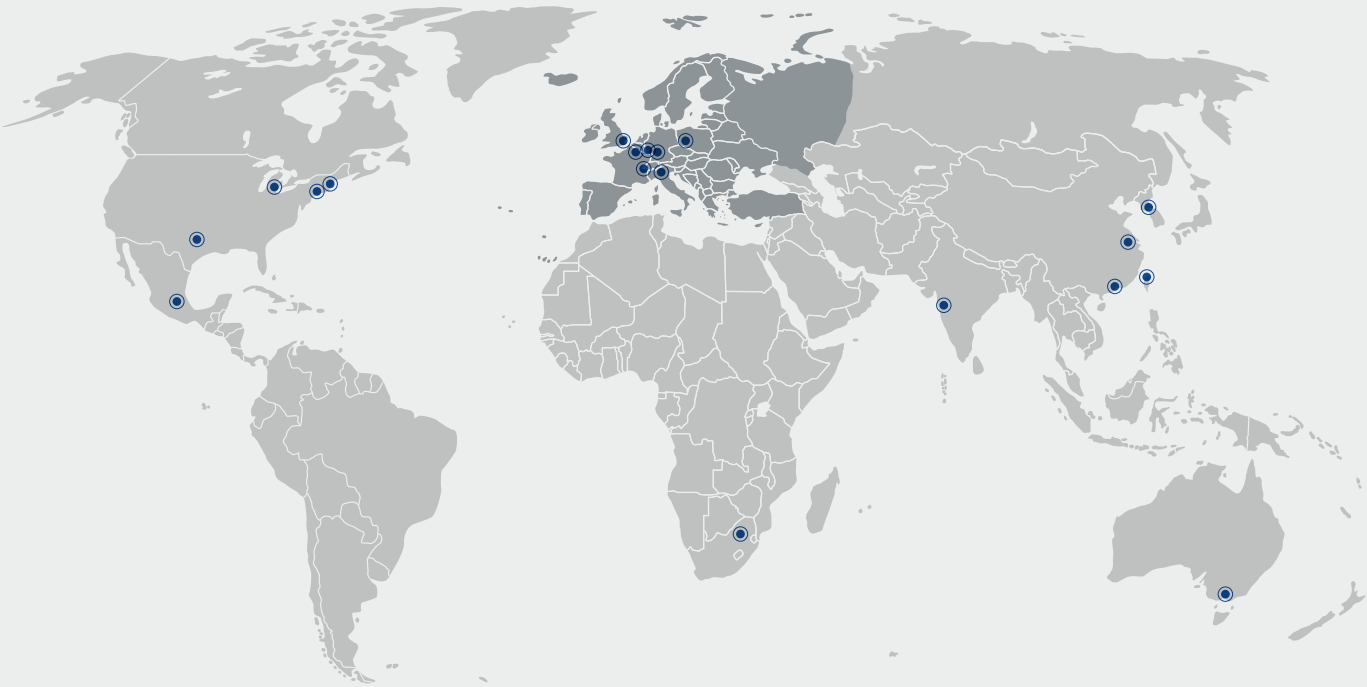
Our key account service is your individual entrance to global know-how, products and services. More than 85 Amphenol companies around the world offer an extensive range of technologies and products. We offer access to our worldwide resources through one individual contact person.

Make use of the best Use our global resources

“Think global, act local!” Independently from where you are in Europe, we offer you our global expertise and great variety of products and technologies. And in comfort with your personal contact. Our numerous European offices are your access to our global resources.

OUR OFFICES IN EUROPE AND WORLDWIDE

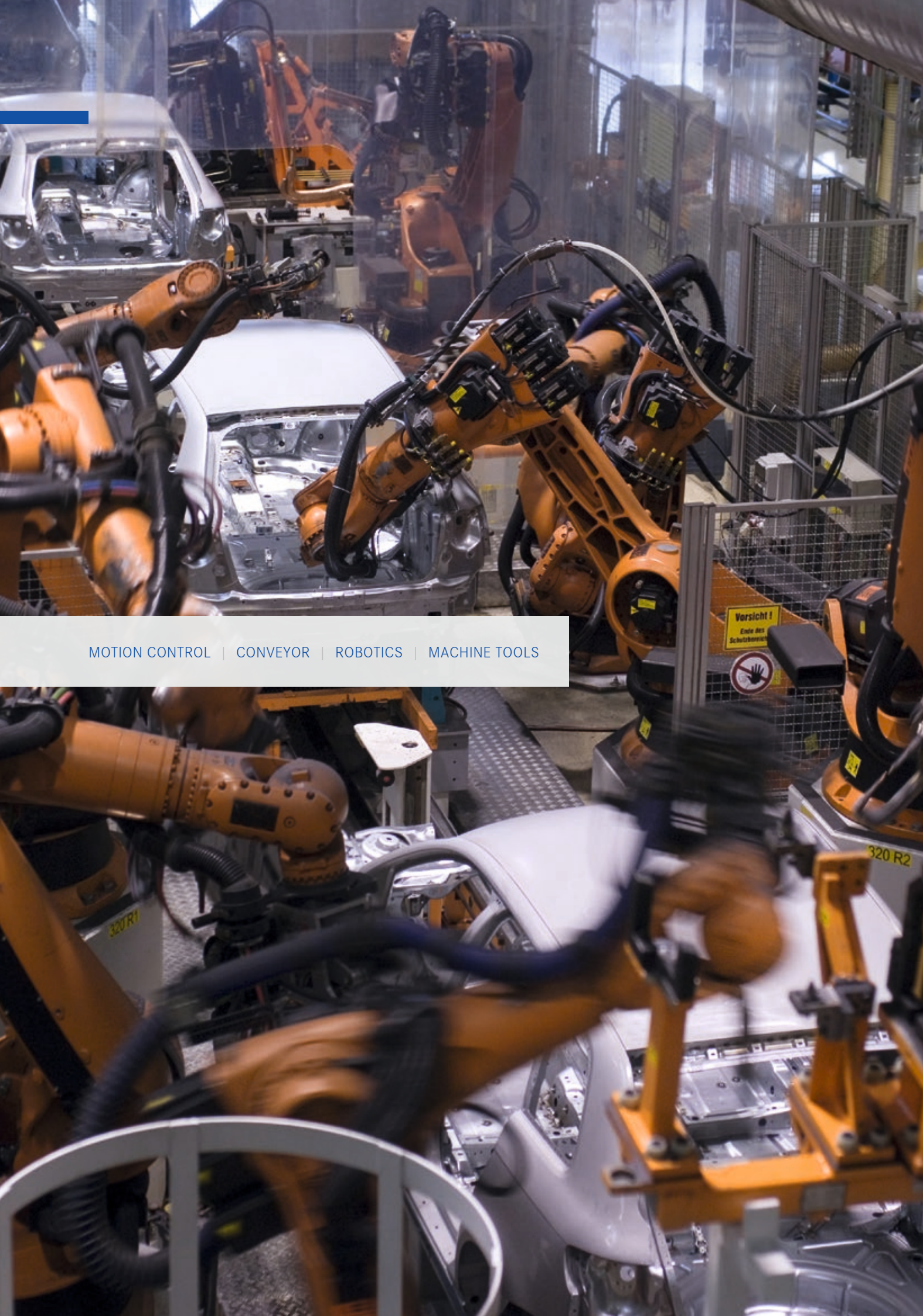
FRANCE	CHINA	AUSTRALIA	SOUTH AFRICA
GERMANY	KOREA	MEXICO	INDIA
UNITED KINGDOM	TAIWAN	USA	ITALY



Keep track with INDUSTRIAL@AMPHENOL industry-specific solutions

Constantly increasing demands increasingly require more customised solutions. Specialised in high quality and specific connections we offer one of the broadest connector portfolios that consists of the global range of all industries.

FACTORY AUTOMATION	09	ENERGY DISTRIBUTION	15
WIRELESS INFRASTRUCTURE	21	SECURITY	25
TRANSPORTATION	29	BROADCAST/ENTERTAINMENT	39
LIGHTING	45	MEDICAL	51
ENERGY GENERATION	55	CHIP CARD TERMINAL COMMUNICATION	63



MOTION CONTROL | CONVEYOR | ROBOTICS | MACHINE TOOLS



Factory automation

Factory automation is the use of control systems as well as information technology to achieve the most efficient manufacturing processes.

It includes a wide range of applications, e.g. motion control, conveyor, robotics, machine tools, and many more. Our interconnect solutions provide highly reliable signal and power transmission for standard connectors and cable assemblies, as well as for customised versions.



RJ AND USB
Innovative connection systems designed to adapt any standard RJ45, USB cable sets into an environmental connector.



62GB
Bayonet lock circular connectors based on Mil-C-26482 for military/industrial markets.



TERRAPIN
Terrapin miniature series of circular push-pull connectors intended for harsh environments.



RJ45
Panel mount, moulded cable, field-installable. Termination: jack, PCB, IDC, screw, pigtails.



M8
Panel mount, moulded cable/field-installable. 5A, 3 to 4 contacts.



M12
Panel mount, moulded cable/field-installable. 2A, 5A, 3, 4, 5, 8 contacts available.



5015 AII
Economic high-power connector.



62IN
Miniature circular connectors for signal.



ECTA 133
Metallic robust push-pull industry connectors. High mating cycles.



MINI-CONNECTOR (7/8"-16UN SCREW THREAD)
Receptacle, field-installable/moulded cable available 7/8"-16UN screw thread.



AC/DC
Application for photovoltaic, industrial automation, power supplies for heavy machinery and others.



BUS AC SOLUTION
Improved power performance, install easily, installation /cost reduction.



ECTA 544
Plastic push-pull connectors. High mating cycles.



GCB-B
Reverse bayonet connectors for rough conditions.



CIRCULAR
Plastic/metallic, thread/bayonet locking system.



TERMINAL BLOCKS
Standard and custom range of PC board terminal blocks, discrete wire solutions, DIN rail.



C16-3
Circular plastic connectors for power + signal.



ECO|MATE
Circular plastic connector for power.



HEAVY|MATE C146
Rectangular heavy-duty connectors for power + signal.



RADSOX
High power contacts and connectors.



CABLE GLANDS INDUSTRIAL
A series of commercial cable glands available with metric and PG threads. These liquid-tight cable glands come in either a L94V-2-rated nylon material or nickel-plated brass materials.



RUGGED USB KEYS
Harsh environment sealed and shock-resistant USB keys - up to 64 GB. Can replace hard drives.



SURLOK™
The SurLok™ non-environmental compression lug, featuring RADSOX® technology, is a field-installable (no torque wrenches), highly reliable, economic alternative to standard one- or two-hole compression lugs.



AMPHE-PP
Amphe-PP is a plastic power connector series which offers a single-phase, two-phase and three-phase multi-core waterproof solution for emerging markets.



M23 AND M40
DIN-style IP67-rated connector system with control and power for automation environments.



MOTION CONTROL
Rockwell-compatible power and encoder static and flex cable turnkey assemblies.



RT360 SERIES
Rugged metal circular connector, power and signal, multiple insert arrangements.



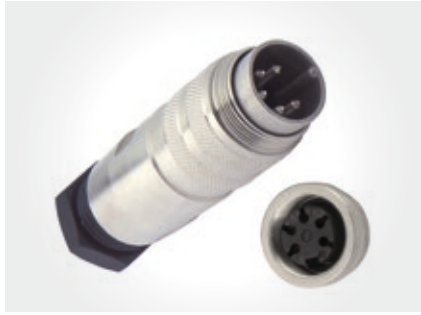
AMPHE-LITE
Amphe-Lite is a commercial composite connector series based on 38999 Series-III-type connectors. Ideal for communications equipment, manufacturing process control and medical equipment.



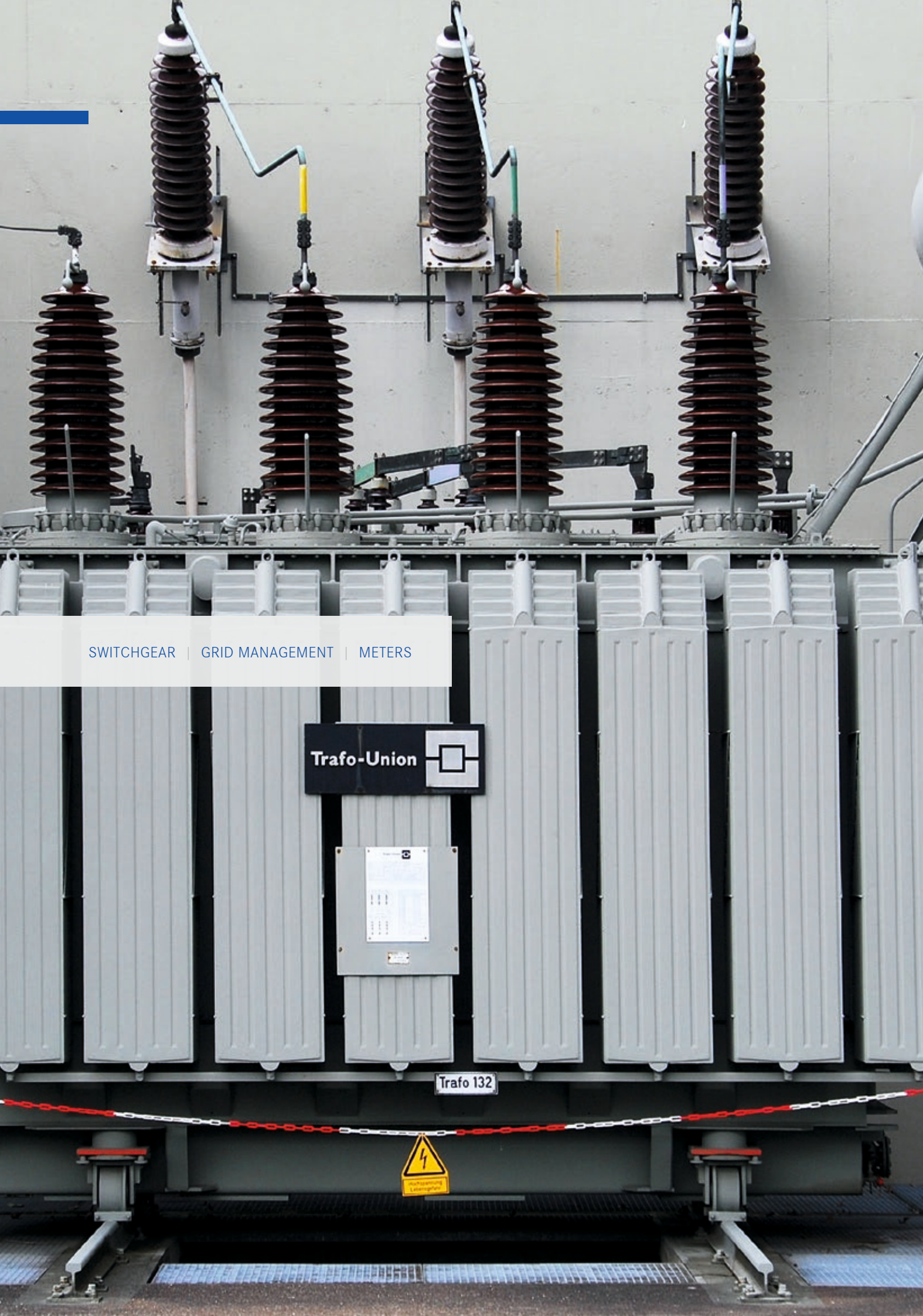
C015
Circular connectors according to MIL-C 5015.



PT
Cylindrical metallic connectors based on the standard MIL-C-26482 in crimp, solder, PCB contacts.



C091
Circular M16 connectors for signal.



SWITCHGEAR | GRID MANAGEMENT | METERS

Trafo-Union



Trafo 132



Energy distribution

Smart grids allow communication between energy generators, stores, transducers and consumers to ensure stable and efficient operation.

Amphenol offers a wide range of measurement and control connectors which have proven themselves to be suitable for indoor and outdoor use. Amphenol connectors have, for example, been in use as a cost-efficient solution for high-, medium- and low-voltage switchgear for many years.



TERRAPIN
Terrapin miniature series of circular push-pull connectors intended for harsh environments.



BUS BAR
Power distribution bars.



HEAVY|MATE C146
Rectangular heavy-duty connectors for power + signal.



ECTA 133
Metallic robust push-pull industry connectors. High mating cycles.



ECTA 544
Plastic push-pull connectors. High mating cycles.



GCB-B
Reverse bayonet connectors for rough conditions.



62GB
Bayonet lock circular connectors based on Mil-C-26482 for military/industrial markets.



AMHTC
High-power transmission.



RJ AND USB
Innovative connection systems designed to adapt any standard RJ45, USB cable sets into an environmental connector.



SJT AIR LB
High-quality bayonet coupling, scoop-proof and high density of contacts.



CIRCULAR
Plastic/metallic, thread/bayonet locking system.



RJ45
Panel mount, moulded cable, field-installable. Termination: jack, PCB, IDC, screw, pigtails.



ETHERNET SWITCHES
A range of high-performance Ethernet switches for the harshest environments.



SJT LTD
Lightweight, high-density, miniature and scoop-proof bayonet connector.



62IN
Miniature circular connectors for signal.



M8
Panel mount, moulded cable, field-installable. 5A, 3 to 4 contacts.



M12
Panel mount, moulded cable, field-installable. 2A, 5A, 3, 4, 5, 8 contacts available.



USB AND IEEE 1394B
USB 2.0 and 3.0, IEEE 1394B for outdoor applications.



PT

Cylindrical metallic connectors based on the standard MIL-C-26482 in crimp, solder, PCB contacts.



C09 1

Circular M16 connectors for signal.



SMART CARD READER

Chip card readers for different applications.



AMPHE-POWER

The Amphenol® series features RADSOK® technology and consists of three time-tested and reliable families of Amphenol industrial connectors (GT, 5015 and P-Lok).



AMPHE-GTR

A mainstay of the high-end server market, the Amphe-GTR series is a composite reverse bayonet connector featuring RADSOK® technology.



SURLOK™

The SurLok™ non-environmental compression lug, featuring RADSOK® technology, is a field-installable (no torque wrenches), highly reliable, economic alternative to standard one- or two-hole compression lugs.

Your notes





BASE STATIONS | WIMAX | AISG AND LTE TECHNOLOGIES



Wireless infrastructure

Circular connectors conforming to AISG (Antenna Interface Standards Group) requirements. Connectors and cable assemblies for outdoor use are subject to many extreme requirements.

Tightness, temperature resistance, salt-mist resistance and UV resistance are just some of the most important criteria a connector must fulfil. Amphenol has set the standards with the C091 circular connector series (IEC 60130-9 conformity). Our successful realisation of the AISG market requirements has made us the global market leader for multipolar circular connectors and assembled wires.



62GB
Bayonet lock circular connectors based on Mil-C-26482 for military/industrial markets.



TERRAPIN
Terrapin miniature series of circular push-pull connectors intended for harsh environments.



SJT LTD
Lightweight, high-density, miniature and scoop-proof bayonet connector.



D-SUB
Receptacle, field-installable/moulded cable available. Screw, latch or automated locking.



USB AND IEEE 1394B
USB 2.0 and 3.0, IEEE 1394B for outdoor applications.



AC/DC
Application for photovoltaic, industrial automation, power supplies for heavy machinery and others.



ECTA 133
Metallic robust push-pull industry connectors. High mating cycles.



ECTA 544
Plastic push-pull connectors. High mating cycles.



CIRCULAR
Plastic/metallic, thread/bayonet locking system.



RJ AND USB
Innovative connection systems designed to adapt any standard RJ45, USB cable sets into an environmental connector.



PT
Cylindrical metallic connectors based on the standard MIL-C-26482 in crimp, solder, PCB contacts.



ECO|MATE
Circular plastic connector for power.



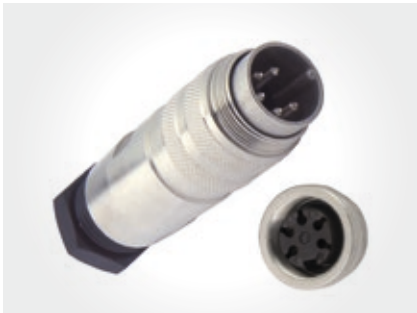
RJ45
Panel mount, moulded cable, field-installable. Termination: jack, PCB, IDC, screw, pigtails.



FIBRE-OPTIC LTW
Plastic receptacle and field-installable LC/SC type for harsh environments.



M12
Panel mount, moulded cable/field-installable. 2A, 5A, 3, 4, 5, 8 contacts available.



C091
Circular M16 connectors for signal.



AMPHE-PD
The Amphe-PD™ series features RADSOK® technology and is ideally suited for use in the data communications and telecommunication markets.



AMPHE-PP
Amphe-PP is a plastic power connector series which offers a single-phase, two-phase and three-phase multi-core waterproof solution for emerging markets.



CCTV | VEHICLES



Security

Amphenol interconnection technologies participate in providing one of the universal, inalienable rights: security.

Amphenol connectors and cable assemblies equip CCTV cameras, traffic control and fast deployable homeland security communication networks.



62GB
Bayonet lock circular connectors based on Mil-C-26482 for military/industrial markets.



TERRAPIN
Terrapin miniature series of circular push-pull connectors intended for harsh environments.



CIRCULAR
Plastic/metallic, thread/bayonet locking system.



SJT LTD
Lightweight, high-density, miniature and scoop-proof bayonet connector.



62IN
Miniature circular connectors for signal.



PT
Cylindrical metallic connectors based on the standard MIL-C-26482 in crimp, solder, PCB contacts.



RJ45
Panel mount, moulded cable, field-installable. Termination: jack, PCB, IDC, screw, pigtails.



FIBRE-OPTIC LTW
Plastic receptacle and field-installable LC/SC type for harsh environments.



AC/DC
Application for photovoltaic, industrial automation, power supplies for heavy machinery and others.



C091
Circular M16 connectors for signal.



AMPHE-LITE
Amphe-Lite is a commercial composite connector series based on 38999 Series-III-type connectors. Ideal for communications equipment, manufacturing process control and medical equipment.



RJ AND USB
Innovative connection systems designed to adapt any standard RJ45, USB cable sets into an environmental connector.



ECO|MATE
Circular plastic connector for power.



SMART CARD READER
Chip card readers for different applications.



HEAVY | MARINE | RAILWAY MASS TRANSIT | AUTOMOTIVE HYBRID/ELECTRIC VEHICLES



Transportation

The Heavy Equipment market segment is one of the most demanding markets in the industry that is subject to environmental impacts. It includes agricultural vehicles, construction equipment and commercial vehicles.

Amphenol has a wide range of connectors specially made for this market, starting with small sealed signal connectors, and going up to complex high-voltage and high-current solutions. Amphenol is a leading specialist for this market and understands the demands, therefore even customer-specific solutions are no problem for us to design.



LUMINUS
The Luminus Series contains small, cost-effective connectors that are highly reliable and simple to use.



HEAVY|MATE C146
Rectangular heavy-duty connectors for power + signal.



ECO|MATE
Circular plastic connector for power.



MINI-CONNECTOR (7/8"-16UN SCREW THREAD)
Receptacle, field-installable/moulded cable available 7/8"-16UN screw thread.



D-SUB
Receptacle, field-installable/moulded cable available. Screw, latch or automated locking type.



USB AND IEEE 1394B
USB 2.0 and 3.0, IEEE 1394B for outdoor applications.



62GB
Bayonet lock circular connectors based on Mil-C-26482 for military/industrial markets.



BUSBAR
Power distribution bars.



ECTA 133
Metallic robust push-pull industry connectors. High mating cycles.



AC/DC
Application for photovoltaic, industrial automation, power supplies for heavy machinery and others.



SL61
Designed to fit multiple industrial applications as well as lighting applications for show business.



RT360 SERIES
Rugged metal circular connector, power and signal, multiple insert arrangements.



ECTA 544
Plastic push-pull connectors. High mating cycles.



GCB-B
Reverse bayonet connectors for rough conditions.



CIRCULAR
Plastic/metallic, thread/bayonet locking system.



AT SERIES
Sealed, submersible, vibration-resistant electrical connectors for heavy-duty applications.



5015 AII
Economic high-power connector.



62IN
Miniature circular connectors for signal.



TERMINAL BLOCKS

Standard and custom range of PC board terminal blocks, discrete wire solutions, DIN rail.



PT

Cylindrical metallic connectors based on the standard MIL-C-26482 in crimp, solder, PCB contacts.



TFOCA II

4- and 12-channel rugged hermaphroditic fibre-optic connector for industrial applications.



M12

Panel mount, moulded cable, field-installable. 2A, 5A, 3, 4, 5, 8 contacts available.



BUS AC SOLUTION

Improved power performance, install easily, installation/cost reduction.



NMEA 2000

Easy, reliable installation for marine devices interconnection. Sealed IP67,68. Micro-C/Mini-C version.



RJ AND USB

Innovative connection systems designed to adapt any standard RJ45, USB cable sets into an environmental connector.



TERRAPIN

Terrapin miniature series of circular push-pull connectors intended for harsh environments.



SJT LTD

Lightweight, high-density, miniature and scoop-proof bayonet connector.



ASGTC

Environmental cylindrical reverse bayonet coupling connector with self-locking system.



FIBRE-OPTIC LTD

Harsh environment fibre-optic connectors and cables for all applications.



ADGC

For signal and power/heavy duty incl. railway.



SJT AIR LB

High-quality bayonet coupling, scoop-proof and high density of contacts.



RJ45

Panel mount, moulded cable, field-installable. Termination: jack, PCB, IDC, screw, pigtails.



FIBRE-OPTIC LTW

Plastic receptacle and field-installable LC/SC type for harsh environments.



RELAY SOCKETS

Fast on type relay sockets, clamping carrier blocks (diodes), etc.



SIM SPLICE

Modular and sealed splice.

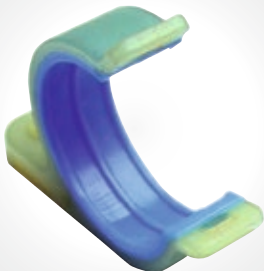


1977 CONNECTORS

Sealed in/out multipin connector.



ASR
Sealed and shielded connector, lightweight, snap-locking system.



CABLE AND PIPE CLAMP
Electrical and hydraulic supports.



EASY MATE
Economic multiway panel and cable connector.



HV AND LV JUMPER
Low-voltage and high-voltage inter-car jumpers.



TERMINAL BLOCKS
Stud type, fast-on type, spring clamp type, insulation displacement.



AMHTC
High-power transmission.



JR JUMPER
Inter-car jumper for EMU combine power, signal and fibre system together.



MRC
Modular rectangular connector.



RFM
Floating rectangular panel and rack connector.



C16-3
Circular plastic connectors for power + signal.



C091
Circular M16 connectors for signal.



EV CHARGER
Slow charger for electric vehicle.



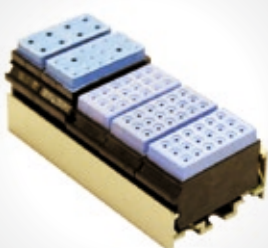
RUGGED USB KEYS
Harsh environment sealed and shock-resistant USB keys - up to 64 GB. Can replace hard drives.



RADSOK
High-power contacts and connectors.



TRU-LOC®
Tru-Loc is a 2-pin connector with 1.5 mm socket contacts featuring Amphenol's exclusive RAD-SOK® contact system. The Tru-Loc connector series is designed to perform in demanding environments, such as under valve covers on diesel engines and in various under-the-hood interconnect applications.



1777 MODULES
Distribution module for wiring optimisation.



HV POWER
High-voltage and current for HEV cable assembly solution.



HVCO CHARGER
Hybrid and electric vehicle charging connector.



ERGO'N
Designed for high-power applications such as electric vehicles. Safe and easy to use.



M23 AND M40
DIN-style IP67-rated connector system with control & power for automation environments.



GT REVERSE BAYONET
Designed around MIL-DTL-5015 insert patterns, this circular reverse bayonet is widely used in geophysical, aerospace, alternative energy and mass-transit industries.



EMP
EMP (Electrical Motor Power), high voltage, high current, IP67 rectangular style, high strength stainless steel screw/nut mechanism



HVSL
Power connection solution, powered with Amphenol RADSOK® 8mm, Inter-Lock function, finger anti-touch construction



AMPHE-POWER
The Amphe-Power® Series features RADSOK® technology and consists of three time-tested and reliable families of Amphenol Industrial Connectors (GT, 5015 and P-Lok).



SURLOK™
The SurLok™ non-environmental compression lug, featuring RADSOK® technology, is a field, installable (no torque wrenches), highly reliable, economic alternative to standard one- or two-hole compression lugs.



AMPHE-PP
Amphe-PP is a plastic power connector series which offers a single-phase, two-phase and three-phase multi-core waterproof solution for emerging markets.



AT CIRCULAR (J1939)
The AT Circular series is a moulded thermoplastic receptacle, the interface is in accordance with the J1939/13 diagnostic connector.



EPOWER
The ePower series of connectors feature RADSOK® technology and are designed for the demanding requirements of hybrid, electric vehicles, and utility truck electrical systems, operating at 800 V DC to 1,000 V DC with a 200 A to 500 A rating.



ASGTC-QUADRAX
Circular bayonet lock connector for Data line transmission, IP67 protection, self-locking system

BROADCAST | AUDIO | VIDEO



Broadcast/entertainment

Amphenol Broadcast Solutions provides high-performance connectors, wire and cable, fibre-optic connectors and management equipment, custom assemblies and interconnection products for audio and video applications for the commercial and professional broadcast and entertainment markets.

Our extensive portfolio includes HD-BNC®, BNC, DIN, XLR, power and lighting, SMP-TE304M, expanded beam and tactical connectors as well as high-performance HD, SDI, VGA, digital and analog cables and tactical fibre-optic cables.

Amphenol Broadcast Solutions combines the best-in-class companies to bring together one of the world's broadest interconnection offerings, advanced technologies, global manufacturing and engineering teams focused on products and solutions for today's and tomorrow's digital broadcast revolution.



62GB
Bayonet lock circular connectors based on Mil-C-26482 for military/industrial markets.



TERRAPIN
Terrapin miniature series of circular push-pull connectors intended for harsh environments.



XLR
Audio, broadcast and lighting signal connector.



FS12
12-channel fibre-optic hermaphroditic connector for broadcast applications.



109 SERIES
4-channel fibre-optic hermaphroditic connector for broadcast applications.



110 SERIES
SMPTE 304M HDTV camera connector series.



RCA
RCA phono plugs and sockets in XLR housing.



SP
High-power loudspeaker connector.



MP
Multipole bayonet locking connector with PG glands.



CIRCULAR
Plastic/metallic, thread/bayonet locking system.



RJ45
Panel mount, moulded cable, field-installable. Termination: jack, PCB, IDC, screw, pigtails.



FIBRE-OPTIC LTW
Plastic receptacle and field-installable LC/SC type for harsh environments.



XLRNET
XLR plug housing for industrial Ethernet connector.



PHONE
1/4" jack sockets and cable plugs.



TFOCA II
4- and 12-channel rugged hermaphroditic fibre-optic connector for industrial applications.



D-SUB
Receptacle, field-installable/moulded cable available. Screw, latch or automated locking type.



AC/DC
Application for photovoltaic, industrial automation, power supplies for heavy machinery and others.



AV
HDMI, DVI, eSATA, receptacle, over-moulded cable assembly. Screw-riveted, latch type.



RJ AND USB
Innovative connection systems designed to adapt any standard RJ45, USB cable sets into an environmental connector.



SL61
Designed to fit multiple industrial applications as well as lighting applications for show business.



ECO|MATE
Circular plastic connector for power.



HEAVY|MATE C146
Rectangular heavy-duty connectors for power + signal.



FIBRE-OPTIC LTD
Harsh environment fibre-optic connectors and cables for all applications.



USB AND IEEE 1394B
USB 2.0 and 3.0, IEEE 1394B for outdoor applications.

Your notes

Handwriting practice area with horizontal lines and a faint world map background.

GENERAL LIGHTING | ARCHITECTURAL | ENTERTAINMENT



Lighting

If architectural lighting combined with artistic integration lights the path, then Amphenol Lighting connects the possibilities: from street lights, highway lights, tunnel lights, media façades, and outdoor areas such as car parks, low bays to area lighting in stadiums.

Amphenol interconnections provide power and data solutions from standard to custom with full IP ratings. Ask us how we can help light your path with possibilities.



SSL SOLUTION CONNECTORS
SSL-1 for SMT smart solutions in lighting.



LUMINUS
The Luminus Series contains small, cost-effective connectors that are highly reliable and simple to use.



SATA CONNECTORS
ALTW's SATA II with latch provides secure, fast and reliable IP67 connection. It includes cable and PCB type for SMD or DIP.



M12
Panel mount, moulded cable/field-installable. 2A, 5A, 3, 4, 5, 8 contacts available.



D-SUB
Receptacle, field-installable/moulded cable available. Screw, latch or automated locking type.



USB AND IEEE 1394B
USB 2.0 and 3.0, IEEE 1394B for outdoor applications.



5015 All
Economic high-power connector.



ECO|MATE
Circular plastic connector for power.



PULSE LOCK
Auto-coupling available in multiple sizes, various pole count densities. Combines signal, power, fibre, RF, pneumatic, fluidics, embedded electronics, etc.



AC/DC
Application for photovoltaic, industrial automation, power supplies for heavy machinery and others.



BUS AC SOLUTION
Improved power performance, install easily, installation/cost reduction.



AV
HDMI, DVI, eSATA, receptacle, over-moulded cable assembly. Screw-riveted, latch type.



CIRCULAR
Plastic/metallic, thread/bayonet locking system.



RJ45
Panel mount, moulded cable, field-installable. Termination: jack, PCB, IDC, screw, pigtails.



FIBRE-OPTIC LTW
Plastic receptacle and field-installable LC/SC type for harsh environments.



44
Circular marine connectors.



HEAVY|MATE C146
Rectangular heavy-duty connectors for power + signal.



SJT LTD
Lightweight, high-density, miniature and scoop-proof bayonet connector.



SL61
Designed to fit multiple industrial applications as well as lighting applications for show business.



XLR
Audio, broadcast and lighting signal connector.



XLRNET
XLR plug housing for industrial Ethernet connector.



110 SERIES
SMPTE 304M HDTV camera connector series.



RJ AND USB
Innovative connection systems designed to adapt any standard RJ45, USB cable sets into an environmental connector.



PT
Cylindrical metallic connectors based on the standard MIL-C-26482 in crimp, solder, PCB contacts.

Your notes

Lined area for taking notes, featuring a faint world map background.



Medical

The transformative power of connectivity. Technology is enhancing and prolonging our lives like never before.

Today's most innovative medical devices rely on Amphenol Medical interconnections to help deliver diagnosis and therapy. With the broadest product lines and the most advanced technologies, Amphenol Medical Solutions offers designers the freedom to transform all that is possible.



62GB
Bayonet lock circular connectors based on Mil-C-26482 for military/industrial markets.



62IN
Miniature circular connectors for signal.



ECTA 133
Metallic robust push-pull industry connectors. High mating cycles.



USB AND IEEE 1394B
USB 2.0 and 3.0, IEEE 1394B for outdoor applications.



AC/DC
Application for photovoltaic, industrial automation, power supplies for heavy machinery and others.



BUS AC SOLUTION
Improved power performance, install easily, installation / cost reduction.



ECTA 544
Plastic push-pull connectors. High mating cycles.



PULSE LOCK
Auto-coupling available in multiple sizes, various pole count densities. Combines signal, power, fibre, RF, pneumatic, fluidics, embedded electronics, etc.



CIRCULAR
Plastic/metallic, thread/bayonet locking system.



RJ AND USB
Innovative connection systems designed to adapt any standard RJ45, USB cable sets into an environmental connector.



M23 AND M40
DIN-style IP67-rated connector system with control and power for automation environments.



RT360 SERIES
Rugged metal circular connector, power and signal, multiple insert arrangements.



RJ45
Panel mount, moulded cable, field-installable. Termination: jack, PCB, IDC, screw, pigtails.



FIBRE-OPTIC LTW
Plastic receptacle and field-installable LC/SC type for harsh environments.



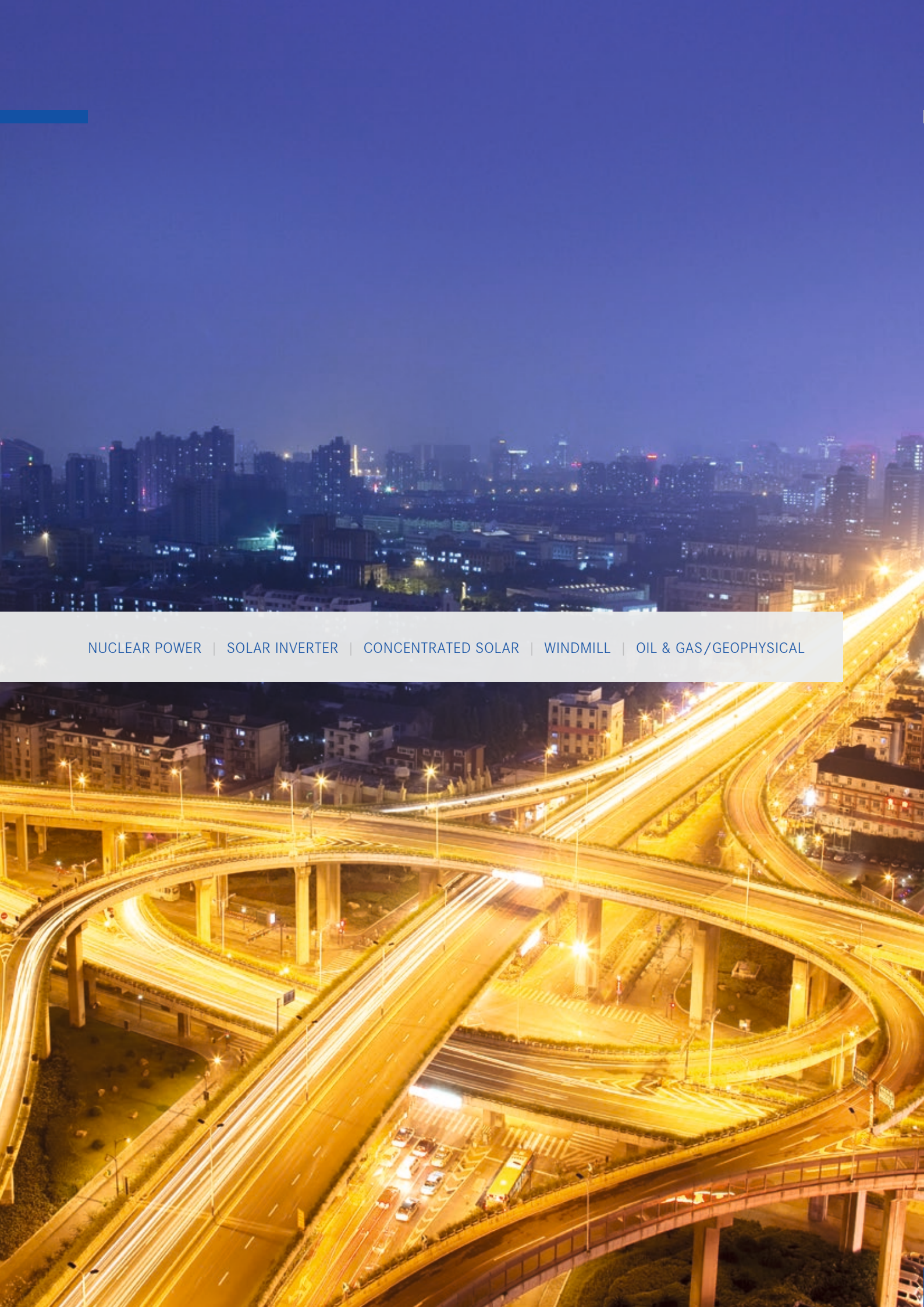
D-SUB
Receptacle, field-installable/moulded cable available. Screw, latch or automated locking type.



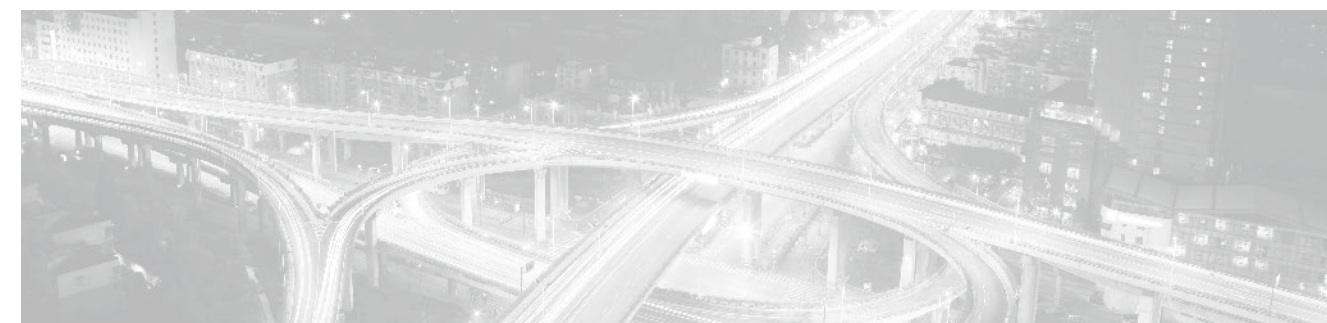
AMPHE-LITE
Amphe-Lite is a commercial composite connector series based on 38999 Series-III-type connectors. Ideal for communications equipment, manufacturing process control and medical equipment.



SURLOK™
The SurLok™ non-environmental compression lug, featuring RADSOK® technology, is a field-installable (no torque wrenches), highly reliable, economic alternative to standard one- or two-hole compression lugs.



NUCLEAR POWER | SOLAR INVERTER | CONCENTRATED SOLAR | WINDMILL | OIL & GAS/GEOPHYSICAL



Energy generation

Amphenol supports the growing diversity of energy generation technologies: from high corrosion resistance, long lifetime offshore wind farms, to low resistivity micro inverters or high bandwidth fibre-optic links for oil & gas seismic.



62GB
Bayonet lock circular connectors based on Mil-C-26482 for military/industrial markets.



TFOCA II
4- and 12-channel rugged hermaphroditic fibre-optic connector for industrial applications.



5015 All
Economic high-power connector.



SL61
Designed to fit multiple industrial applications as well as lighting applications for show business.



ECO|MATE
Circular plastic connector for power.



TERRAPIN
Terrapin miniature series of circular push-pull connectors intended for harsh environments.



62IN
Miniature circular connectors for signal.



NUCLEAR MODULE
Distribution module for K1 zone.



NUCLEAR SPLICE
Power distribution blocks for K2 zone.



SJT LTD
Lightweight, high-density, miniature and scoop-proof bayonet connector.



C16-3
Circular plastic connectors for power + signal



CIRCULAR
Plastic/metallic, thread/bayonet locking system.



NUCLEAR JUNCTION BLOCK
Power distribution blocks for K2 zone.



RJ AND USB
Innovative connection systems designed to adapt any standard RJ45, USB cable sets into an environmental connector.



PT
Cylindrical metallic connectors based on the standard MIL-C-26482 in crimp, solder, PCB contacts.



RJ45
Panel mount, moulded cable, field-installable. Termination: jack, PCB, IDC, screw, pigtails.



M12
Panel mount, moulded cable/field-installable. 2A, 5A, 3, 4, 5, 8 contacts available.



D-SUB
Receptacle, field-installable/moulded cable available. Screw, latch or automated locking type.



USB AND IEEE 1394B
USB 2.0 and 3.0, IEEE 1394B for outdoor applications.



AC/DC
Application for photovoltaic, industrial automation, power supplies for heavy machinery and others.



BUS AC SOLUTION
Improved power performance, install easily, installation/cost reduction.



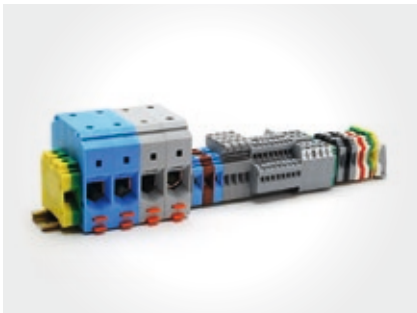
OCEANUS
Our OCEANUS Series of Connectors are tailored to meet the rugged demands of the subsea market. The product family offers versatile, high-performance characteristics including 9,000 psi open face pressure ratings, underwater wet mateable connectors, multipin configurations, high speed (coax and fibre-optic) and over-moulded cable assembly options.



ETHERNET SWITCHES
A range of high-performance Ethernet switches for the harshest environments.



HEAVY|MATE C146
Rectangular heavy-duty connectors for power + signal.



TERMINAL BLOCKS
Standard and custom range of PC board terminal blocks, discrete wire solutions, DIN rail.



C091
Circular M16 connectors for signal.



M8
Panel mount, moulded cable/field-installable. 5A, 3 to 4 contacts.



AMHTC
High-power transmission.



M28876
Up to 31-channel harsh environment fibre-optic connector series.



ECTA 133
Metallic robust push-pull industry connectors. High mating cycles.



ERGO'N
Designed for high power applications such as electric vehicles. Safe and easy to use.



M23 AND M40
DIN-style IP67-rated connector system with control & power for automation environments.



RT360 SERIES
Rugged metal circular connector, power and signal, multiple insert arrangements.



ECTA 544
Plastic push-pull connectors. High mating cycles.



GCB-B
Reverse bayonet connectors for rough conditions.



SJT AIR LB
High-quality bayonet coupling, scoop-proof and high density of contacts.



CUSTOM DESIGN ASF

Adaptation from existing connectors or custom solutions to address specific needs.



CUSTOM AFSI

Amphenol supplies multi-channel hybrid optical/electrical inserts to the marine seismic industry for use in towed-array geoseismic systems up to 30 bar. All connectors for this application are custom-designed to suit customer requirements.



DEEPSIGHT

Fibre-optic downhole connector for oil and gas applications.



TMPC POWER MOUNT

The TMPC Power Mount incorporates our existing TMPC connectors with RADSOK® contacts into our new thermoplastic moulded receptacle flange.



NEPTUNE®

NEPTUNE® incorporates our RADSOK® contact technology and is typically used in oil exploration equipment and portable power distribution equipment.



CABLE GLANDS INDUSTRIAL

A series of commercial cable glands available with metric and PG threads. These liquid-tight cable glands come in either a UL94V-2-rated nylon material or nickel-plated brass materials.



HELIOS H4 CONNECTOR

The premiere solar connector in the market today, carries more amps, has a higher IP rating, and is fully intermatable with the industry standard connector.



GT REVERSE BAYONET

Designed around MIL-DTL-5015 insert patterns, this circular reverse bayonet is widely used in geophysical, aerospace, alternative energy and mass-transit industries.



AMPHE-POWER

The Amphe-Power® Series features RADSOK® technology and consists of three time-tested and reliable families of Amphenol Industrial Connectors (GT, 5015 and P-Lok).



STAR-LINE™

The Amphenol Star-Line™ series connectors are heavy-duty, environmentally sealed plugs and receptacles used in peak power generating systems, offshore petroleum production, power distribution and data acquisition.



KTK

Our KTK is moulded and machined glass-filled epoxy with gold contacts and a Viton O-ring. Kintec-compatible and can be fully integrated with the GE Tensor configuration. These connectors offer high-pressure- and high-temperature-sealed connections standard in the downhole industry.



VORTEX GT

The Vortex GT is a single pole 18 mm reverse bayonet connector incorporating RADSOK® technology. Designed to deliver high power from source to load with the option of crimp, 2-hole busbar or threaded busbar termination on the receptacle side.



AMPHE-PP

Amphe-PP is a plastic power connector series which offers a single-phase, two-phase and three-phase multi-core waterproof solution for emerging markets.



AMPHE-EX

Amphe-EX is a miniature, explosion-proof threaded connector specifically designed to allow a signal to pass through zone-rated areas using coax, fibre-optic cables or standard copper.



SET TOP BOX | POINT OF SALES | TACHOGRAPHS | HEALTH CARD



Chip card terminal communication

Rising security demands are the driving force for new smart card applications. They will push the use of chip-based Smart Cards in the public sector, healthcare and pay-TV to double-digit growth over the coming years.

Chip and PIN payment card use continues to spread worldwide, and chip-based health cards are also growing rapidly. In such a fast-moving industry, customer behaviour can change in just a short space of time. Intelligent chip-card-based solutions offer the chance for companies in all markets to re-engage with their customers and reach out to new ones. Amphenol is the leading supplier of smart card connectors for every chip-based smart card application, and offers application-specific products that will inspire you.



CIRCULAR
Plastic/metallic, thread/bayonet locking system.



RJ45
Panel mount, moulded cable, field-installable. Termination: jack, PCB, IDC, screw, pigtails.



FIBRE-OPTIC LTW
Plastic receptacle and field-installable LC/SC type for harsh environments.



SMART CARD READER
Chip card readers for different applications.

Your notes

Handwritten notes area with horizontal lines and a faint world map background.





Sales Offices

FR Amphenol Socapex S.A.S.
948, Promenade de l'Arve. BP 29
Thyez Cedex, 74311 France
Phone: +33 (0) 4 5089 2800
contact@amphenol-socapex.fr
www.amphenol-socapex.com

DE Amphenol-Tuchel Electronics GmbH
August-Haeusser-Strasse 10
Heilbronn, 74080 Germany
Phone: +49 (0) 7131 929 0
info@amphenol.de
www.amphenol.info

UK Amphenol Limited
Thanet Way, Whitstable
Kent, CT53JF United Kingdom
Phone: +44 (0) 1227 773 200
info@amphenol.co.uk
www.amphenol.co.uk

ROE Amphenol European Sales Operations
Via Barbaiana 5
Lainate, 20020 Italy
Phone: +39 (0) 2 93 254 1
www.industrial-amphenol.com

Responsibility:

Italy, San Marino, Malta, Spain, Portugal,
Belgium, Netherlands, Luxembourg, Sweden,
Norway, Denmark, Finland, Estonia, Latvia,
Lithuania, Poland, Austria, Czech, Slovakia,
Rumania, Hungary, Switzerland, Slovenia,
Greece, Bulgaria, Croatia, Bosnia-Herzegovina,
Serbia, Montenegro, Macedonia

WWW.INDUSTRIAL-AMPHENOL.COM

